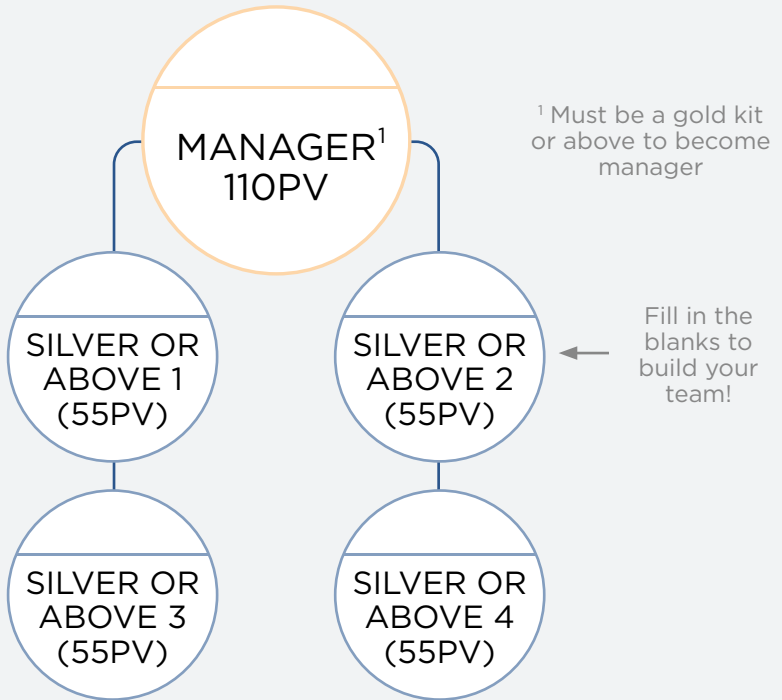


# 3 STEP PROCESS

## MANAGER TO SENIOR DIRECTOR

### STEP 01

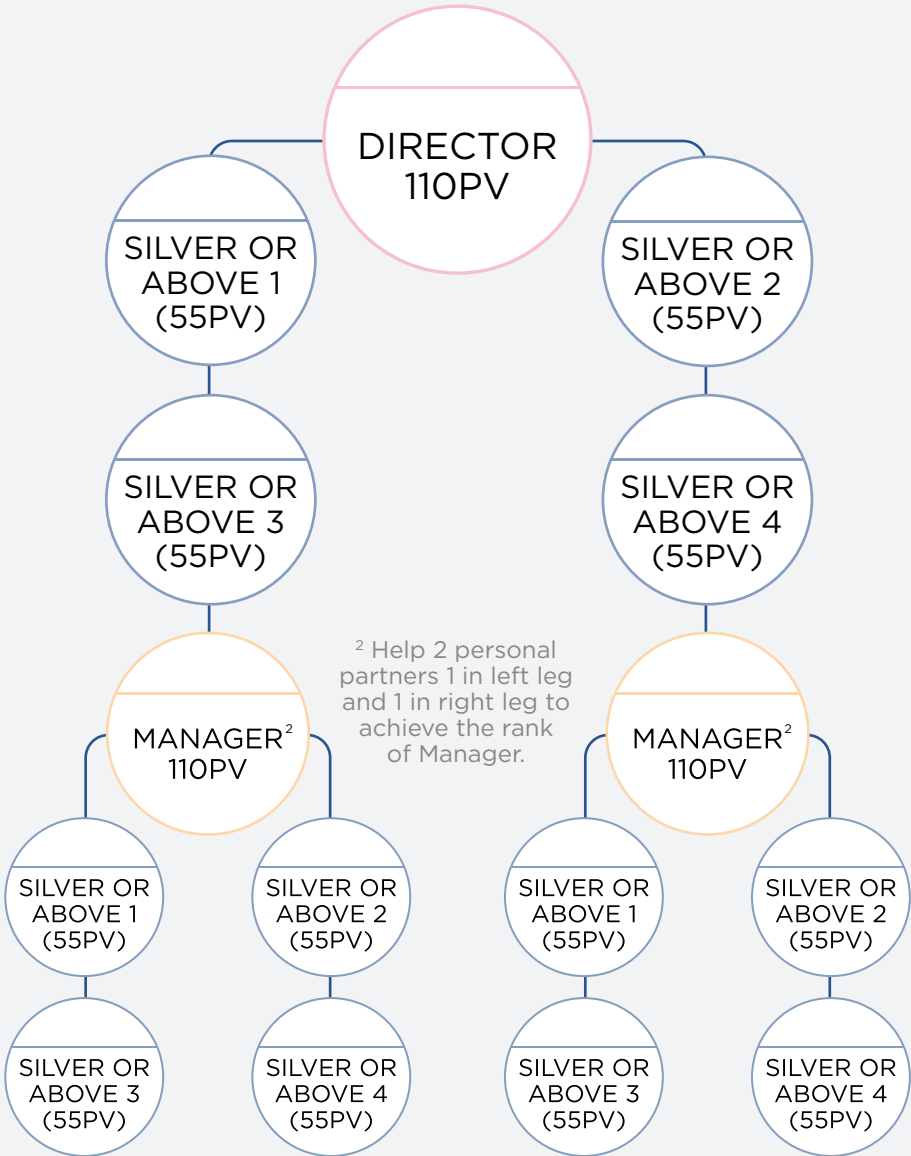


You need at least 2 personally sponsored active silver partners in your left & right leg.

#### END OF MONTH 1 OPTIONS:

1. Order 1 sleeve of patches
2. Order a 3 or 6 month maintenance pack
3. Upgrade to a diamond pack

# STEP 02

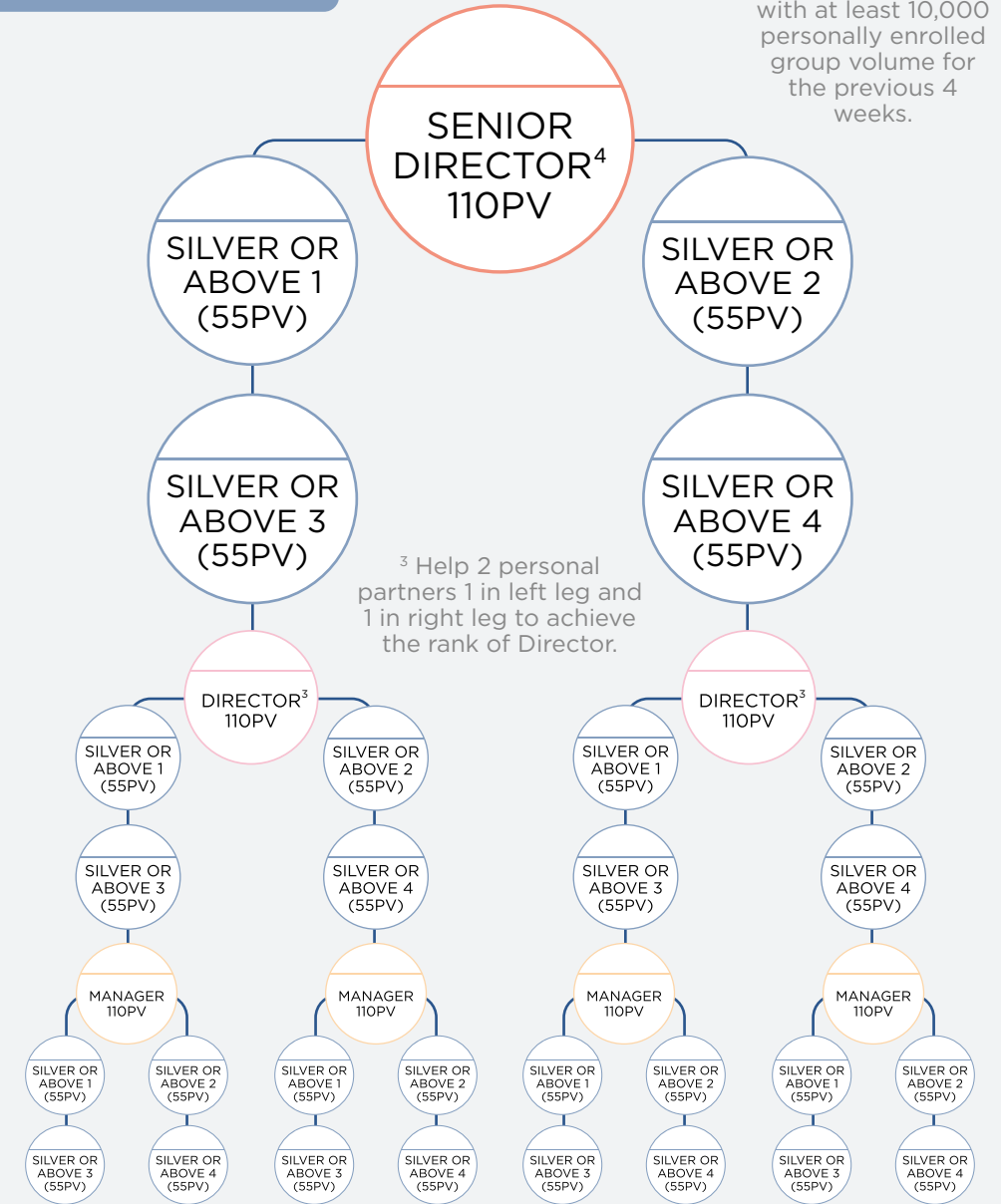


## END OF MONTH 2 OPTIONS:

1. Order 1 sleeve of patches
2. Order a 3 or 6 month maintenance pack
3. Upgrade to a diamond pack

# STEP 03

<sup>4</sup> You must be a qualified director with at least 10,000 personally enrolled group volume for the previous 4 weeks.



## END OF MONTH 3 OPTIONS:

1. Order 1 sleeve of patches
2. Order a 3 or 6 month maintenance pack
3. Upgrade to a diamond pack